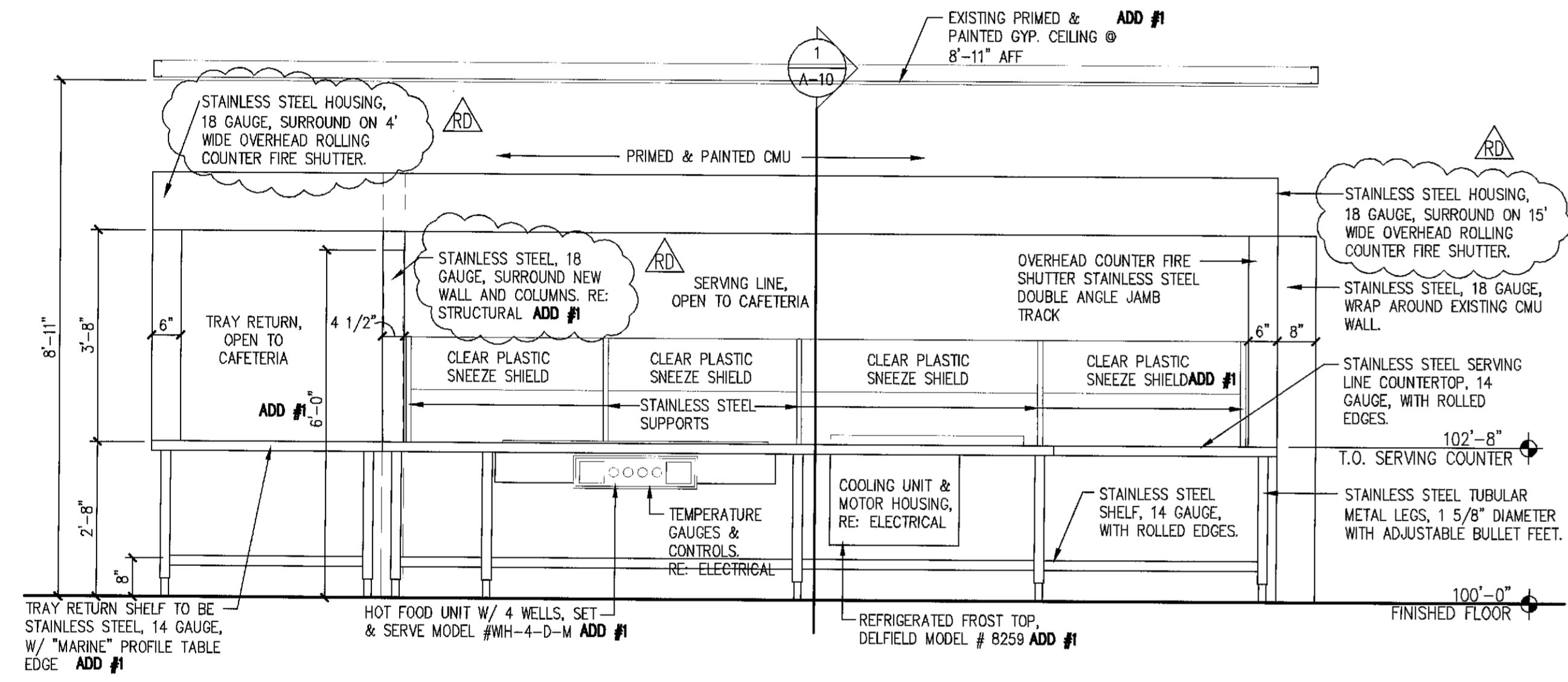
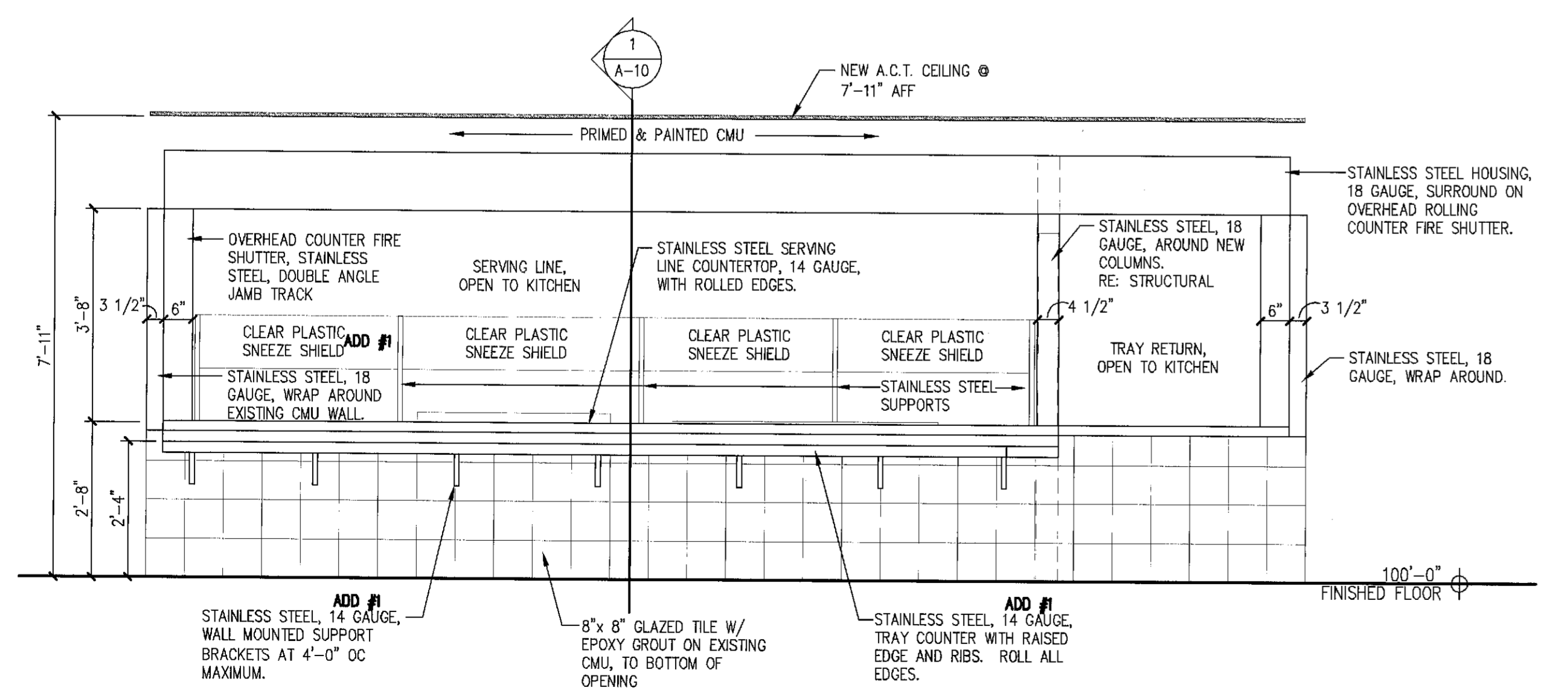


**2 CABINET ELEVATIONS**  
SCALE: 1/2" = 1'-0" ADD #1



**3 S.S. SERVING SIDE ELEVATION**  
SCALE: 1/2" = 1'-0" ADD #1



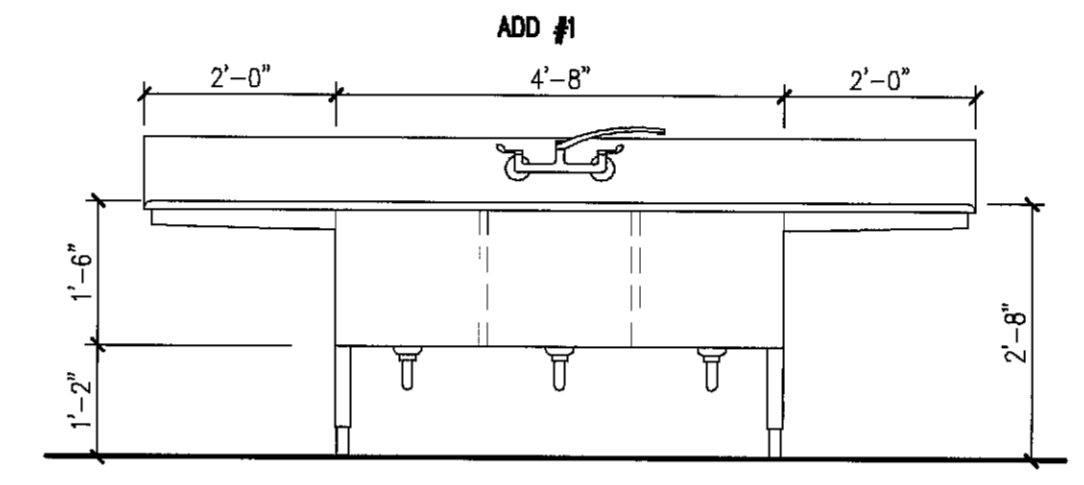
**4 S.S. CAFETERIA SIDE ELEVATION**  
SCALE: 1/2" = 1'-0" ADD #1

**PARTITION SCHEDULE**

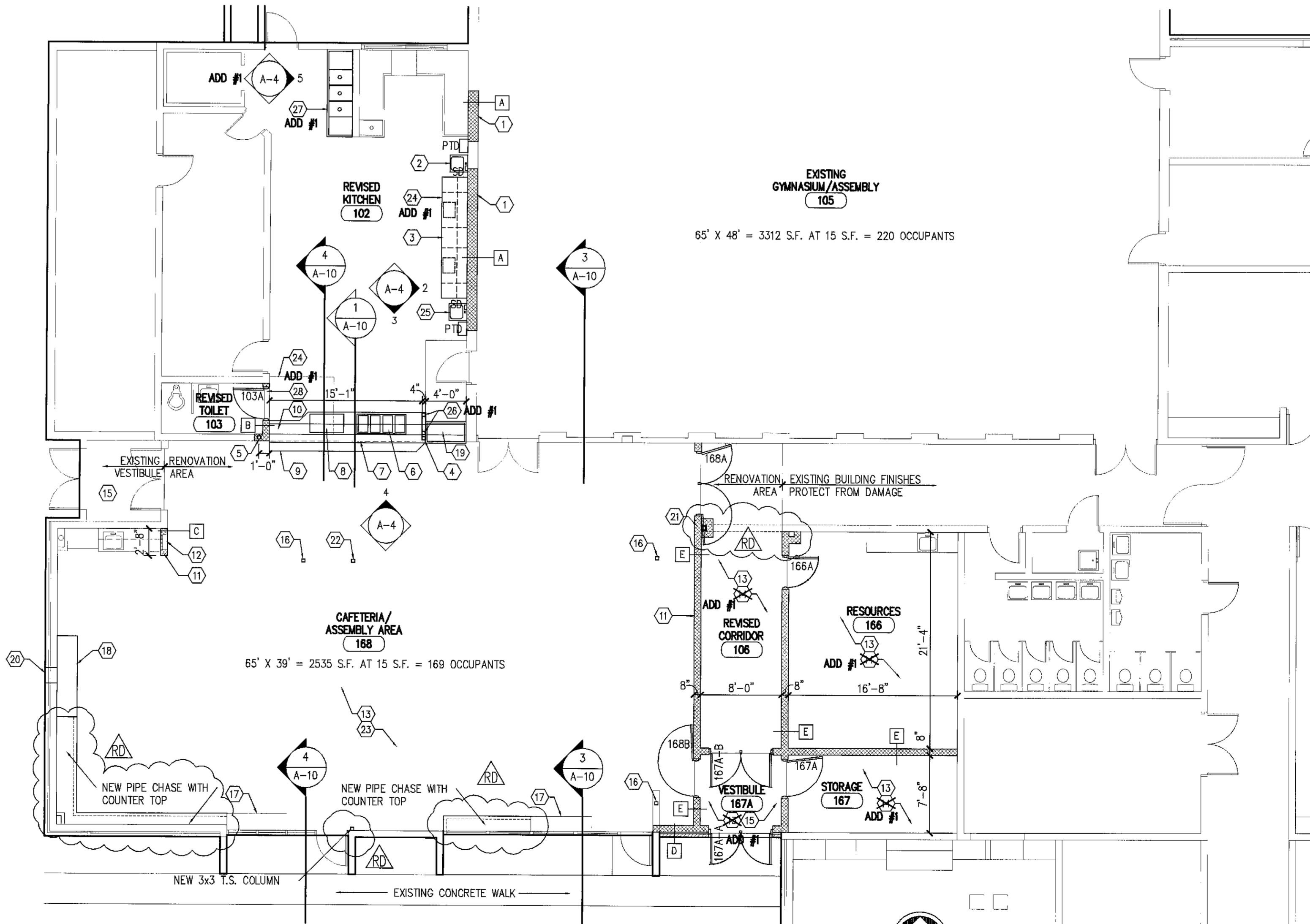
- A NEW CMU INFILL IN AN EXISTING INTERIOR WALL: PRIMED & TWO FINISH COAT PAINTED, 12" CMU INFILL AT PREVIOUS OPENING. INSTALL CONTINUOUS #4 REBAR AT 4'-0" OC VERTICALLY IN FULLY GROUTED CELLS AND DURO-WALL REINFORCING AT 16" OC HORIZONTALLY.
- B NEW INTERIOR WALL: PRIMED & 2 FINISH COAT PAINTED, 8" CMU TO MINIMUM OF 9'-4" AFF. INSTALL CONTINUOUS #4 REBAR AT 4'-0" OC VERTICALLY IN FULLY GROUTED CELLS AND DURO-WALL HORIZONTAL JOINT REINFORCING AT 16" OC.
- C NEW INTERIOR WALL: PRIMED & 2 FINISH COAT PAINTED, 8" CMU TO MINIMUM OF 8'-8" AFF. INSTALL CONTINUOUS #4 REBAR AT 4'-0" OC VERTICALLY IN FULLY GROUTED CELLS AND DURO-WALL HORIZONTAL JOINT REINFORCING AT 16" OC.
- D NEW BRICK/BLOCK INFILL IN AN EXISTING EXTERIOR WALL: 4" MODULAR BRICK WITH 2" RIGID INSULATION IN 2" AIRSPACE AND 8" CMU WALL FULL HEIGHT TO UNDERSIDE OF EXISTING ROOF DECK AND TO INFILL THE NEWLY CREATED OPENING. CMU TO HAVE CONTINUOUS #4 REBAR AT 4'-0" OC VERTICALLY IN FULLY GROUTED CELLS AND DURO-WALL HORIZONTAL JOINT REINFORCING AT 16" OC. CMU SHALL BE PRIMED AND TWO FINISH COAT PAINTED ON INSIDE ROOM SIDE.
- E NEW INTERIOR WALL: PRIMED AND TWO FINISH COAT PAINTED, BOTH SIDES OF 8" CMU TO UNDERSIDE OF EXISTING ROOF DECK ABOVE. CMU TO HAVE CONTINUOUS #4 REBAR AT 4'-0" OC VERTICALLY IN FULLY GROUTED CELLS AND DURO-WALL HORIZONTAL JOINT REINFORCING AT 16" OC.

**GENERAL NOTES**

- 1) GENERAL CONTRACTOR SHALL COORDINATE ALL MECHANICAL, ELECTRICAL, AND GENERAL CONSTRUCTION WORK SHOWN AT VARIOUS LOCATIONS THROUGHOUT THE DRAWINGS, WHETHER OR NOT CROSS-REFERENCED. MECHANICAL AND ELECTRICAL ITEMS MAY OCCUR WHICH ARE NOT SHOWN ON THE ARCHITECTURAL FLOOR PLAN, REFLECTED CEILING PLANS, OR ROOF PLAN.
- 2) ALL DIMENSIONS ARE FROM FACE OF STUD, FACE OF MASONRY, OR CENTERLINE OF COLUMN UNLESS OTHERWISE NOTED. DIMENSIONS OF INTERIOR CASEWORK ARE FROM FACE OF FINISHED WALL.
- 3) PROVIDE NON-COM WOOD BLOCKING OR BACKING IN WALLS AT ALL LOCATIONS WHERE ITEMS SUCH AS WALL CABINETS, TOILET ACCESSORIES AND OTHER ITEMS REQUIRING BACKING OR BLOCKING ARE TO BE FURNISHED AND INSTALLED.
- 4) POCH'E'D WALLS ON NEW CONSTRUCTION FLOOR PLAN INDICATE NEW CONSTRUCTION.
- 5) REFER TO DEMOLITION PLAN, NEW CONSTRUCTION PLAN AND DOOR SCHEDULES REGARDING WORK UNDER THIS CONTRACT REQUIRED ON DOORS.
- 6) ALL EXISTING FLOORS RECEIVING NEW FLOOR COVERINGS SHALL BE PATCHED AND LEVELED AS REQUIRED FOR NEW FLOOR COVERING MATERIAL.
- 7) NOTIFY ARCHITECT IMMEDIATELY SHOULD CONDITIONS BE FOUND CONTRADICTORY TO THESE DRAWINGS.
- 8) ALL DIMENSIONS MUST BE VERIFIED PRIOR TO CONSTRUCTION.
- 9) REPAIR FLOORS, WALLS, CEILINGS AND OTHER EXISTING CONSTRUCTION TO REMAIN THAT ARE DAMAGED DURING CONSTRUCTION. PATCH EXISTING DAMAGED WALLS. REMOVE UNUSED NAILS AND FILL ALL HOLES AS REQUIRED. INSTALL PLASTIC DUST CONTAINMENT BARRIERS DURING ALL CONSTRUCTION.
- 10) ALL INCIDENTAL ITEMS ON WALLS RECEIVING NEW FINISHES AND NOT CONSISTENT WITH NEW WORK SHALL BE REMOVED.
- 11) REFER TO MECHANICAL AND ELECTRICAL PLANS FOR ADDITIONAL WALL REMOVAL THAT MAY NOT BE INDICATED ON ARCHITECTURAL DRAWINGS AND IS REQUIRED TO INSTALL PIPING, CONDUIT, ETC. RECONSTRUCT AND FINISH WALLS TO MATCH ADJACENT WALLS.

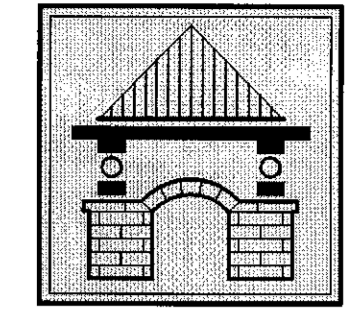


**5 3 COMPARTMENT SINK ELEVATION**  
SCALE: 1/2" = 1'-0" ADD #1



**1 REVISED CAFETERIA FLOOR PLAN**  
SCALE: 1/8" = 1'-0" ADD #1

- KEYNOTES - REVISED CAFETERIA FLOOR PLAN A-4**
- 1) NEW PRIMED & TWO FINISH COAT PAINTED, 8" WIDE CMU INFILL WALL. REFER TO STRUCTURAL DRAWINGS FOR RELATED INFORMATION.
  - 2) NEW STAINLESS STEEL HAND SINK, SOAP DISPENSER AND PAPER TOWEL DISPENSER. REFER TO 2/A-4 & MECHANICAL DRAWINGS FOR RELATED INFORMATION.
  - 3) NEW PLASTIC LAMINATE COUNTER TOP, BASE AND UPPER CABINETS. REFER TO 2/A-4 FOR RELATED INFORMATION.
  - 4) NEW STAINLESS STEEL WRAPPED, 4X4 PRIMED, TUBE STEEL COLUMN WITH STEEL BEAM ABOVE. REFER TO STRUCTURAL DRAWINGS FOR RELATED INFORMATION.
  - 5) NEW 4X4 STRUCTURAL STEEL COLUMN WITHIN CMU WALL. PATCH CMU AROUND COLUMN TO MATCH. REFER TO STRUCTURAL DRAWINGS FOR RELATED INFORMATION.
  - 6) NEW STAINLESS STEEL, 4 COMPARTMENT STEAMER TRAYS ON THE STAINLESS STEEL SERVING LINE. REFER TO ELECTRICAL DRAWINGS FOR RELATED INFORMATION.
  - 7) NEW STAINLESS STEEL SERVING LINE WITH TOP AND LOWER SHELF. MOUNT TOP AT 2'-8" AFF. REFER TO 1/A-10 & 3,4/A-4 AND ELECTRICAL DRAWINGS FOR RELATED INFORMATION.
  - 8) NEW STAINLESS STEEL, ELECTRIC CHILLER SERVING TRAY. REFER TO 3/A-4, 1/A-10 AND ELECTRICAL DRAWINGS FOR RELATED INFORMATION.
  - 9) NEW STAINLESS STEEL SERVING SHELF, 12" DEEP X LENGTH INDICATED, MOUNTED AT 2'-3 1/2" AFF. REFER TO 1/A-10 & 3, 4/A-4 FOR RELATED INFORMATION.
  - 10) NEW OVERHEAD ROLLING FIRE COUNTER SHUTTER GRILLE WITH FUSABLE LINK, STAINLESS STEEL OVERHEAD HOUSING AND STAINLESS STEEL TRACK AND TRIM. UNIT RATED FOR 1-HOUR. REFER TO 1/A-10 AND ELECTRICAL DRAWINGS FOR RELATED INFORMATION.
  - 11) NEW PRIMED AND TWO FINISH COAT PAINTED, 8" CMU WALL. REFER TO STRUCTURAL AND ELECTRICAL DRAWINGS FOR RELATED INFORMATION.
  - 12) NEW ELECTRICAL PANEL. REFER TO ELECTRICAL DRAWINGS FOR RELATED INFORMATION.
  - 13) NEW ACT IN PRE-FINISHED GALVANIZED METAL CEILING GRID. REFER TO A-6 FOR RELATED INFORMATION.
  - 14) NEW FORBO SHEET LINOLEUM W/ WELDED SEAMS. REFER TO SPECIFICATIONS FOR RELATED INFORMATION.
  - 15) NEW COLLINS & AIKMAN TRIAD CORD MAT FLOORING. REFER TO SPECIFICATIONS FOR RELATED INFORMATION.
  - 16) EXISTING COLUMN TO REMAIN. CLEAN, TOUCH-UP PRIMER WHERE REQUIRED AND TWO FINISH COAT PAINT.
  - 17) EXISTING UNIT VENTILATOR, REFER TO MECHANICAL FOR RELATED INFORMATION.
  - 18) NEW UNIT VENTILATOR, REFER TO MECHANICAL FOR RELATED INFORMATION.
  - 19) STAINLESS STEEL TRAY RETURN AREA. REFER TO SHEET A-4 FOR RELATED INFORMATION.
  - 20) INSTALL UNIT VENTILATOR VENTILATION GRILLE, SEAL TIGHT, TOTAL PERIMETER FOR WEATHERTIGHT SEAL. RE: MECHANICAL DRAWINGS FOR ALL RELATED INFORMATION.
  - 21) NEW 4X4 PRIMED, TUBE STEEL COLUMN WITH STEEL BEAM ABOVE IN 8" CMU WALL. REFER TO STRUCTURAL DRAWINGS FOR RELATED INFORMATION.
  - 22) NEW 4X4 TUBE STEEL COLUMN, PRIMED & 2 FINISH COAT PAINTED, WITH STEEL BEAM ABOVE. REFER TO STRUCTURAL DRAWINGS FOR RELATED INFORMATION.
  - 23) FORBO SHEET LINOLEUM W/ WELDED SEAMS, EQUAL TO MARMOLEUM GLOBAL 2 LINE "DUAL" COLOR SERIES, 6'-0" WIDE SHEETS @ 2.5mm THICKNESS. RE: WWW.FORBO.COM FOR RELATED INFORMATION, COLOR BY OWNER.
  - 24) INSTALL QUARRY TILE TO MATCH EXISTING IN AFFECTED AREAS, FLOORING & BASEBOARDS.
  - 25) RE-LOCATED PAPER TOWEL DISPENSER AND SOAP DISPENSER. INSTALL NEW STAINLESS STEEL HAND SINK.
  - 26) NEW 18 GA. STAINLESS STEEL SPLASH PARTITION @ 6'-0" AFF. WELD 2 COLUMNS TO STAINLESS SERVING COUNTER TOP, ADD 4" METAL STUDS FOR RIGIDITY & WRAP WITH STAINLESS STEEL CAULK AROUND ALL SEAMS.
  - 27) NEW 14 GA. STAINLESS STEEL 3 COMPARTMENT SINK, COMPARTMENTS TO BE 18"W x 24"L x 18"D W/ 24" SIDEBORD TOPS THAT DRAIN TOWARDS COMPARTMENTS, APPROX. 24"W EACH & HAS A "MARINE" TABLE EDGE PROFILE, OR SIMILAR, THAT KEEPS LIQUIDS FROM SPILLING OFF OF TOP. PROVIDE SHOP DRAWINGS OF ALL LOCATIONS. SCRIBE & CUT STAINLESS STEEL COUNTERTOP TO FIT AROUND EXISTING CONDUITS. SEAL WATER TIGHT.



**MELLIN & ASSOCIATES ARCHITECTS, P.C.**  
5570 East Yale Avenue  
Denver, CO 80222  
Phone: 303-681-2646  
Fax: 303-758-1688  
CIVILIN & ASSOCIATES ARCHITECTS, P.C.

**CONSULTANTS:**

**STRUCTURAL ENGINEER**  
Sundquist Design Group  
12136 West Bayaud Avenue  
Suite 102  
Lakewood, CO 80228  
303-504-4885  
303-504-4886 Fax  
Contact: Joe Sundquist P.E.

**MECHANICAL ENGINEER**  
Given & Associates, Inc  
735 South Xenon Ct  
Suite 201  
Lakewood, CO 80228  
303-716-1270  
303-716-1272 Fax  
Contact: Jeff A Given P.E.

**ELECTRICAL ENGINEER**  
Alber Engineering Inc  
10499 Bradford RD #102  
Littleton, CO 80127  
303-985-3260  
303-987-2304 Fax  
Contact: Clarence Bernal

**PROJECT TITLE:**

Classroom Addition & Cafeteria Renovation for Cache La Poudre Elementary School

Poudre School District

**ISSUED**

REVISIONS	
D.D.'s	04-06-06
95% C.D.'s	05-01-06
100% C.D.'s	05-08-06
RECORD DOCUMENTS	06-08-07

**TITLE**

REVISED FLOOR PLAN & ELEVATIONS (CAFETERIA AREA)